

Cockroaches

The German, American, Brown-Banded and Oriental cockroaches are the most common cockroach species in the Northwest. Cockroaches reproduce rapidly, and in the case of the German cockroach, from a single female, populations of over 10,000 are produced within one year.

German cockroach -

- 1/2 inch, pale brown, 2 longitudinal brown stripes, both sexes have wings but don't fly
- A single female lays 4 to 5 egg sacks, 30-40 offspring in each, young are often confused with bed bugs
- German cockroaches are flat and able to harbor in most cracks and crevices near food and water (kitchens and bathrooms) and are a primary pest of restaurants and multi-family housing

American cockroach -

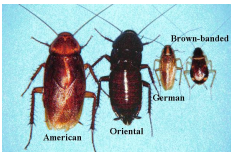
- 2.1 inches, brown to reddish brown, both sexes winged and are able to glide
- A single female produces 6 to 14 egg sacks with 14 to 16 eggs per sack
- Frequently inhabits sewers and steam tunnels in Seattle, entering buildings following pipes

Oriental cockroach -

- 1.25 inches, dark brown to black, female has wing pads, male has 3/4 wings and does not fly
- Prefer damp areas, found in crawlspaces, basements, sewers and decaying food

Brown-Banded cockroach -

- 1/2 inch, brown with 2 lighter bands across the body and wings, only males fly
- Found high in buildings, especially in the ceiling and behind picture frames



- Cockroaches spread at least 33 types of bacteria, six types of parasitic worms and seven other human pathogens and are the second most common cause of allergies
- Cockroach droppings, secretions, cast skins and dead bodies supply allergens for humans and can boost a child's risk of developing asthma
- In very large infestations, cockroaches have been observed feeding on sleeping peoples' sores, hair, eyelashes, eyebrows, fingernails and toenails

Control Measures –

1. Everything begins with a professional inspection. It is vital to be sure the roach species that is present in the building. This inspection will be of the interior, and an honest appraisal of the property managers view of the issue.
2. From the inspection, a graph will be made that indicates where the roaches are to be found..
3. A meeting between the customer and the technical advisor should take place to review the findings and recommendations in step two and agreement reached for a control and maintenance program.
4. Once a control program is agreed upon, the implementation of control measures follow the four levels of control;
 - ✓ Access denial and exclusion to control bed bug movement
 - ✓ Habitat and harborage modification, making the location undesirable
 - ✓ Physical and mechanical modifications to keep them out, placing monitors to continue evaluating the location
 - ✓ Limited material application
5. Following treatment, all work will be documented and a free follow-up service planned.

For more information, please call Fikes Pest Control at (800) 900-1083